



# **Chevron Non-Profit Learning Center**

## **Layout Options**

Workshop/Seminar

Lecture

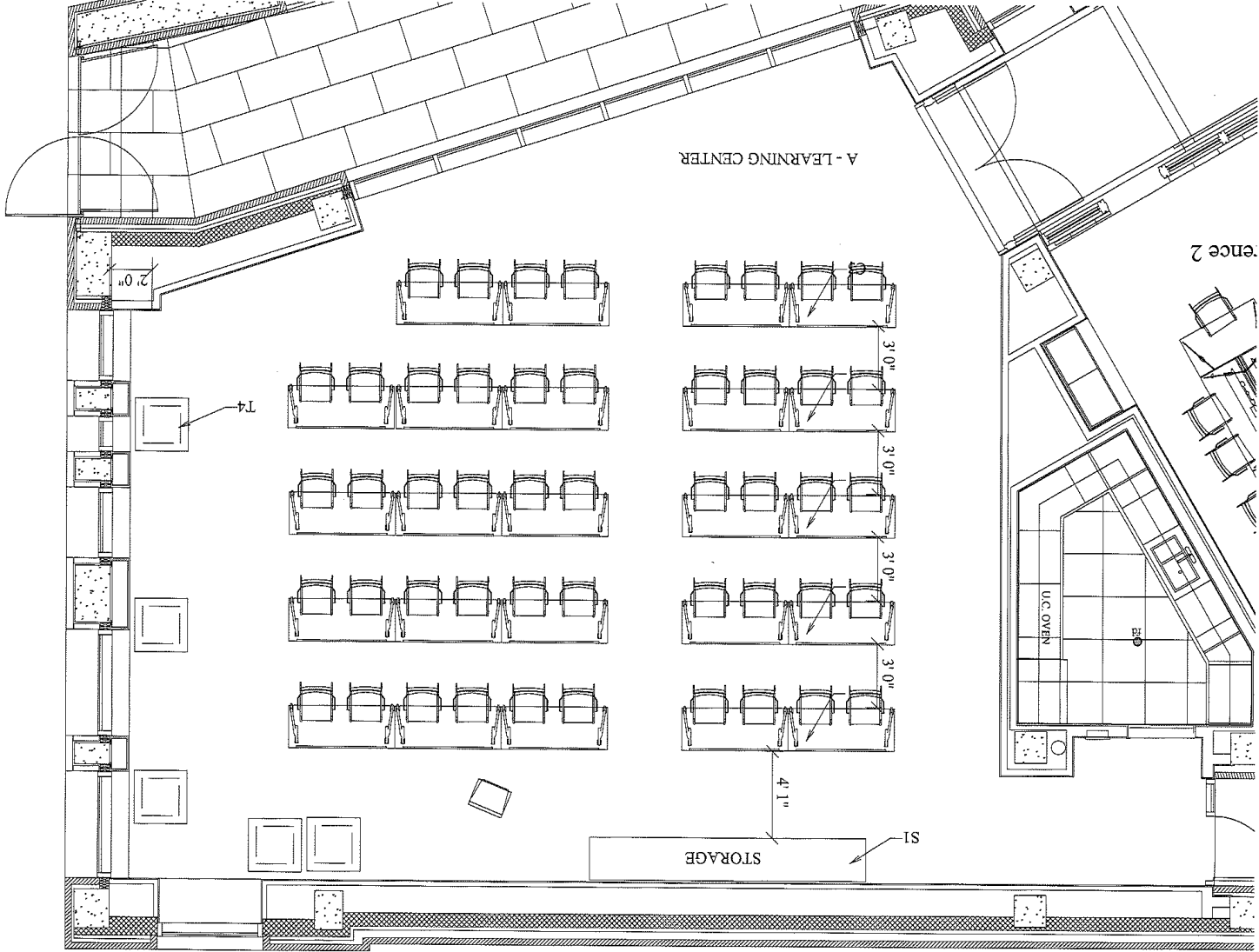
Board Meeting

Discussion Group

Stand-Up Reception (no tables or chairs)

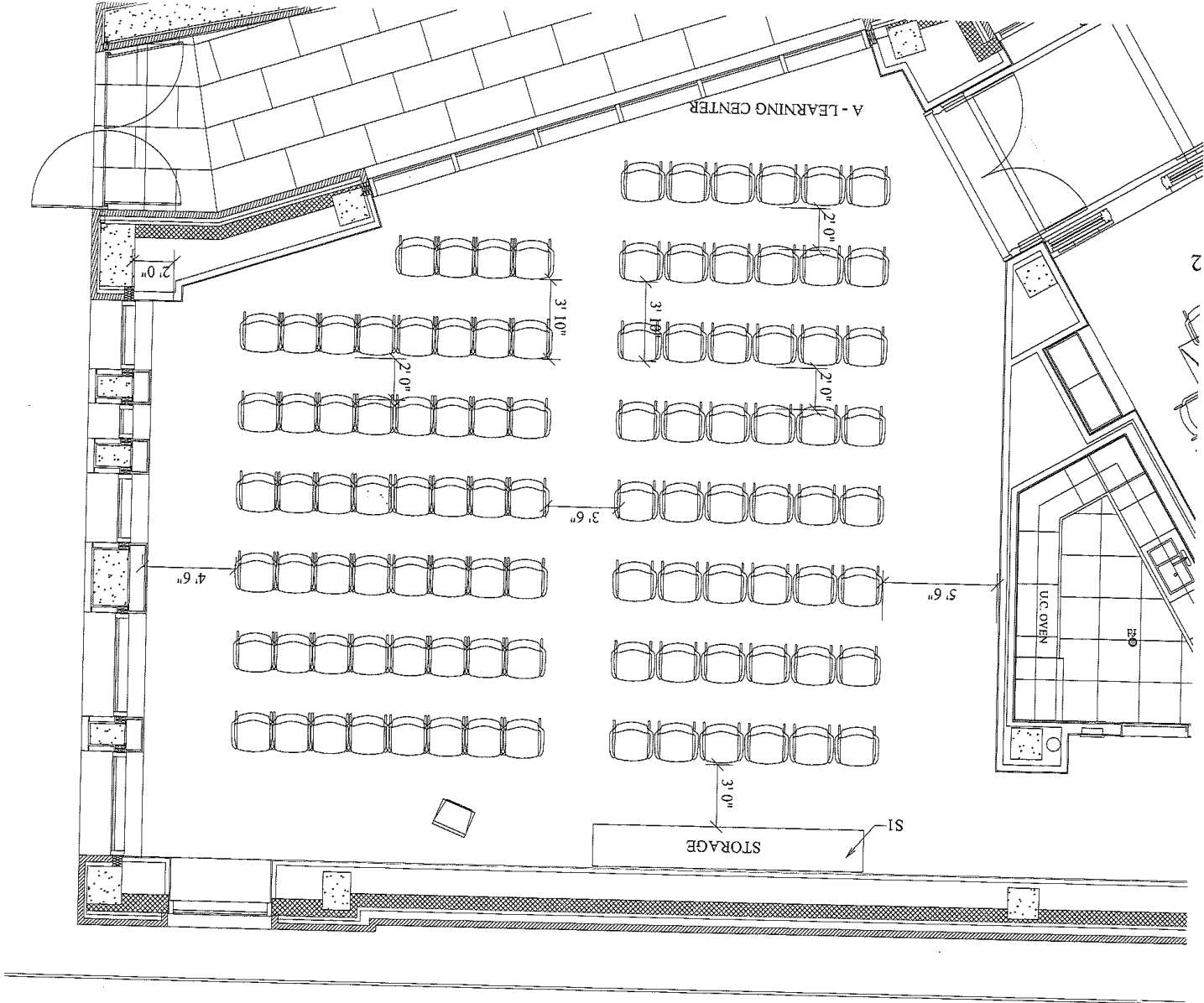
# Workshop/Seminar:

Maximum 44 people--this is the Standard Room Layout



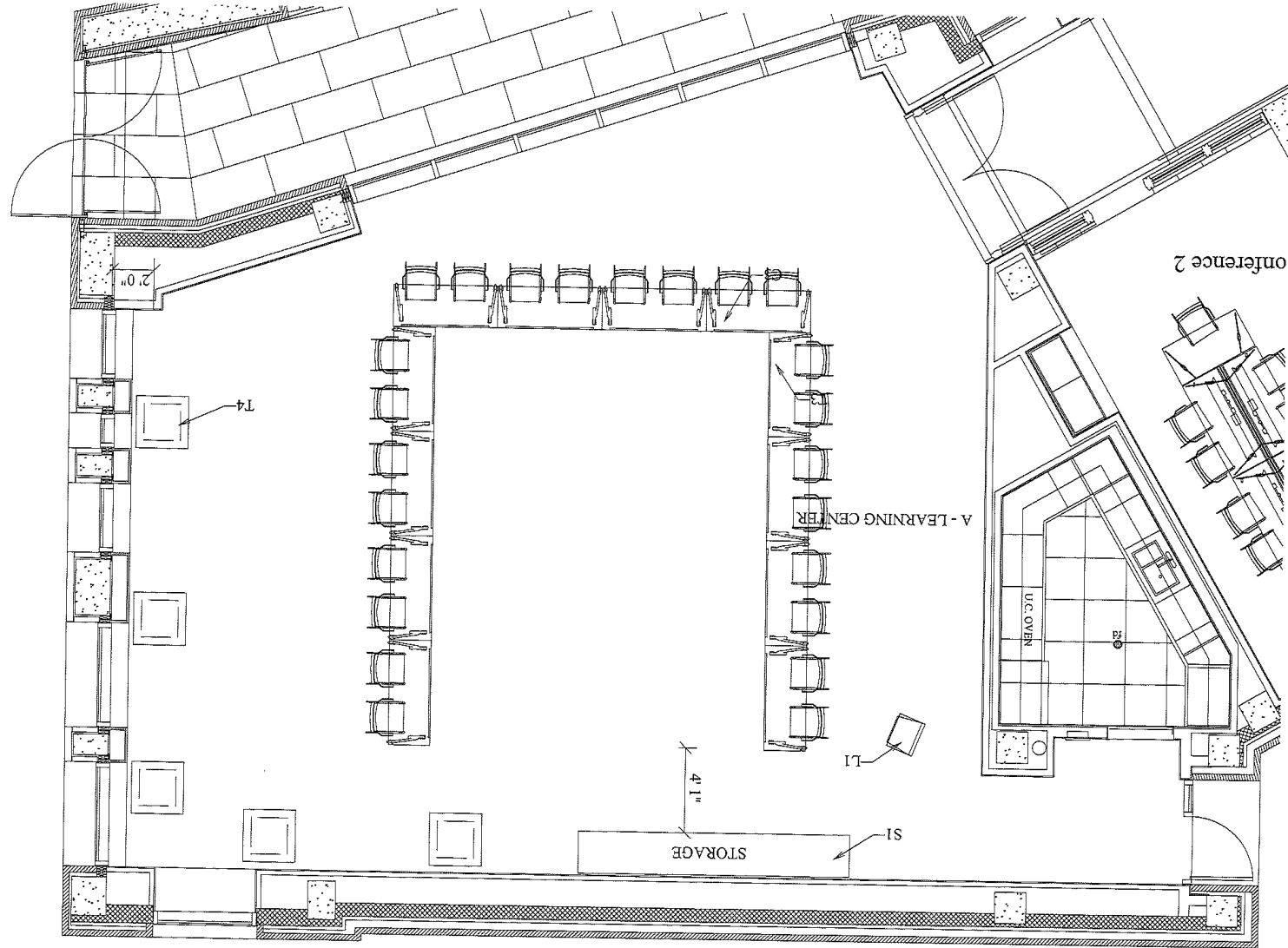
# Lecture:

100 people maximum with no food tables in room. With food tables maximum of 75 people.



# Board Meeting:

Maximum of 24 people



# Discussion Groups:

Maximum 36 people

